



Managing Students

An ORC Online Tutorial



Manage Students in ORC Online

- The Basics
- Visual Function Level
- Reading Medium
- Other Fields



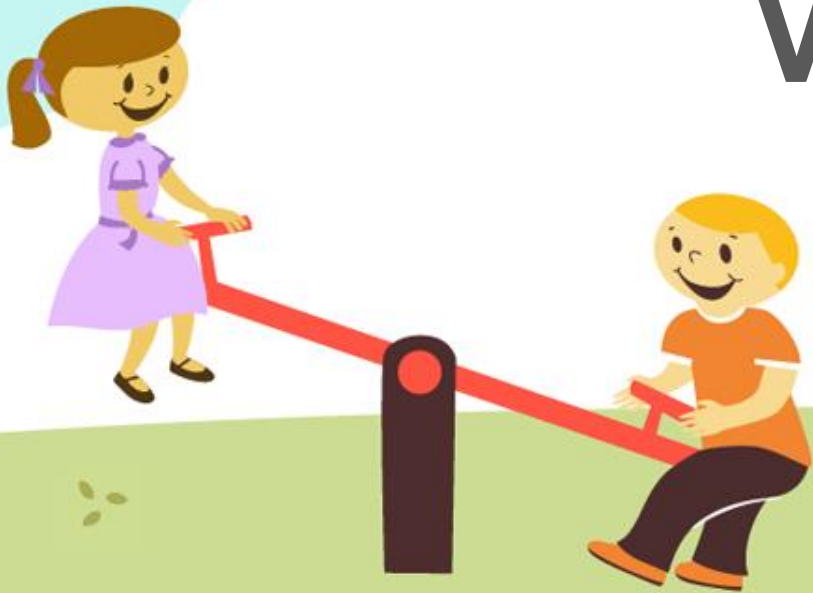
The Basics

- **Name:** Check spelling, email Jennifer if spelling needs to be corrected
- **Birthdate:** Important to distinguish duplicates
- **Grade Level:** Please update when student changes grades



Visual Functional Level

The biggest challenge!



Choosing Visual Functional Level

MDB

Meets the Definition of Blindness:
Central visual acuity of 20/200 or less in the better eye with best correction; or a peripheral field so contracted that the widest diameter of such field subtends an angular distance no greater than 20 degrees

FDB

Functions at the Definition of Blindness:
Visual performance reduced by a brain injury or dysfunction that meets the definition of blindness as determined by an eye specialist or neurologist



IEP, 504 or FVE

- Used **only** when the student does not meet the criteria for FDB or MDB and qualifies for vision services.
- A student can be FDB and IEP for example, so you would select FDB in ORC Online.

Why not IEP, 504, FVE instead of FDB or MDB?

- Students that meet the FDB or MDB definition are eligible for our Census which is how we get Quota funds from APH. If a student is not registered as FDB or MDB, they do not qualify for funds.
- However, we still serve them...so yes, we do want to keep them in the database if they are eligible for vision services under an IEP, 504 or FVE even if they do not qualify as FDB or MDB.



Selecting Visual Function: Examples

Student 1

- Right eye 20/200
- Left eye 20/400
- IEP in place

Correct Visual Function

- MDB, visual acuity meets the definition under MDB; “Central visual acuity of 20/200 or less in the better eye with best correction”



Examples

Student 2

- Diagnosis of Cortical Visual Impairment and undetermined acuity.

Correct Visual Function

- FDB



Answers

Student 3

- Visual acuity of 20/70 and qualifies for vision services.

Correct Visual Function

- IEP, 504 or FVE



Reading Media

Primary Media

Choose only 1:

- **V: *Visual Readers*:** Students primarily using print in their studies
- **B: *Braille Readers*:** Students primarily using braille in their studies
- **A: *Auditory Readers*:** Students primarily using a reader or auditory materials in their studies
- **PRE: *Pre-readers*:** Students working on or toward a readiness level; infants, preschooler, or older students with reading potential
- **N: *Nonreaders*:** Non-reading students; students who show NO reading potential; and students who do not fall into any of the categories shown above

Secondary & Other Reading Media

Choose only 1:

- **V: *Visual Readers*:** Students use print to some extent
- **B: *Braille Readers*:** Students use braille to some extent
- **A: *Auditory Readers*:** Students use a reader or auditory materials to some extent
- **N/A: *Not Applicable*:** Nonreaders, pre-readers, or student with NO additional reading media



Other Fields

Multiple Birth

- No
- Twin
- Triplet
- Multiple

Primary Instructional Language

- Primary language of learner.
Primary language used in the classroom.



Other Fields (con.)

Disability

- **Select only 1**
 - Not Applicable
 - Orthopedic impairment
 - Other health impairment
 - Specific learning disability
 - Intellectual disabilities
 - Multiple disabilities
 - Deafness
 - Hearing impairment
 - Visual impairment
 - Deaf-Blindness
 - Autism
 - Traumatic brain injury
 - 504 plan
 - Development Delay
 - Emotional/behavior disability
 - Speech or language impairment



Updating Schools

Email Jennifer, jennifer.fenton@wssb.wa.gov, if a student moves to a new school.

Verify information after student is transferred.

Please note that materials follow students to their new schools so if a student has an inventoried item listed that is no longer with the student, please contact Jennifer.



Website for ORC Online:

<http://orc.wssb.wa.gov>

Contact:

Jennifer Fenton

jennifer.fenton@wssb.wa.gov

360-947-3340

Thanks!

Ogden Resource Center
Washington State School for the Blind
2310 East 13th Street
Vancouver, WA 98661

